



The Sherwood



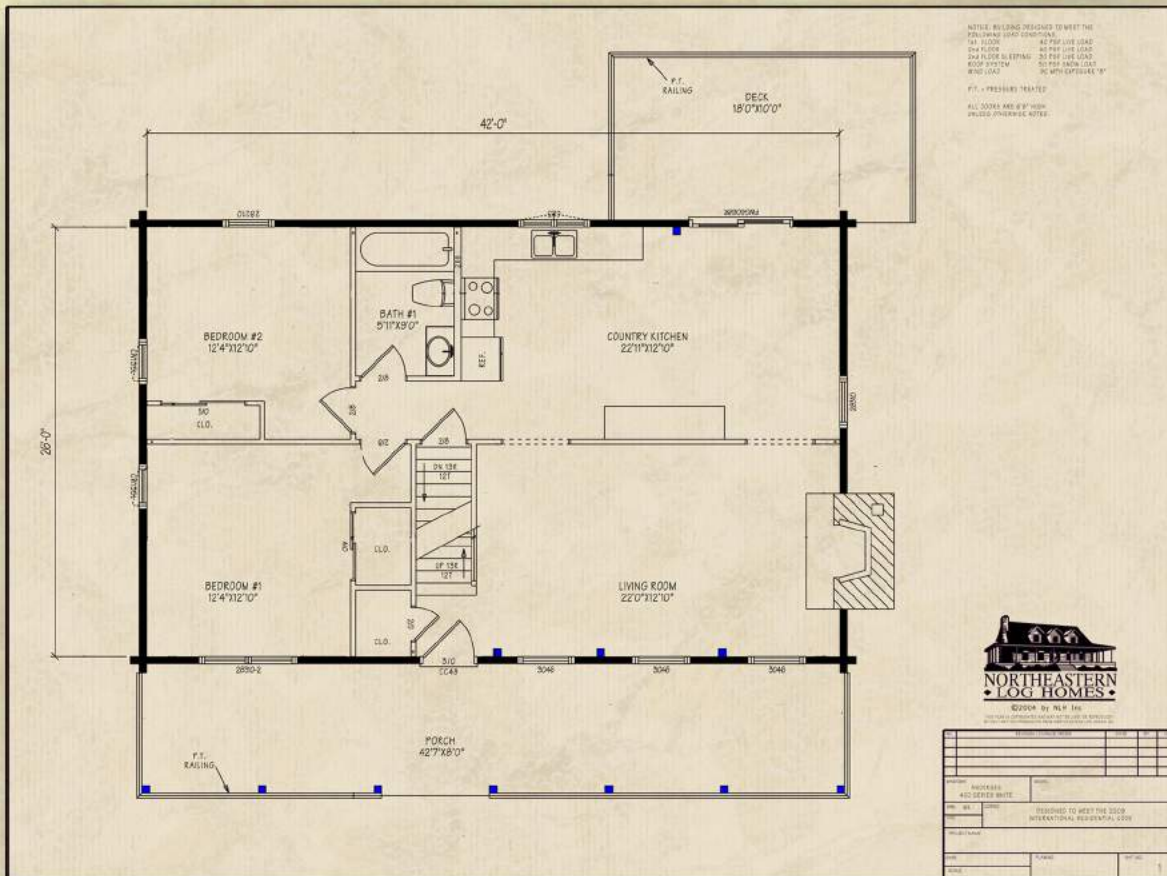
Northeastern Log Homes

info@northeasternlog.com 800-624-2797 www.northeasternlog.com

*Artist's rendering, photography and optional design ideas may vary from the standard model. Please always consult the standard floorplan and refer to the Premier Series material list as to what is included.



The Sherwood



Premier Home Series

 26' x 42' Size

 1,846 Square Feet

 Three Bedrooms

 Two Baths

Optional Design Ideas:

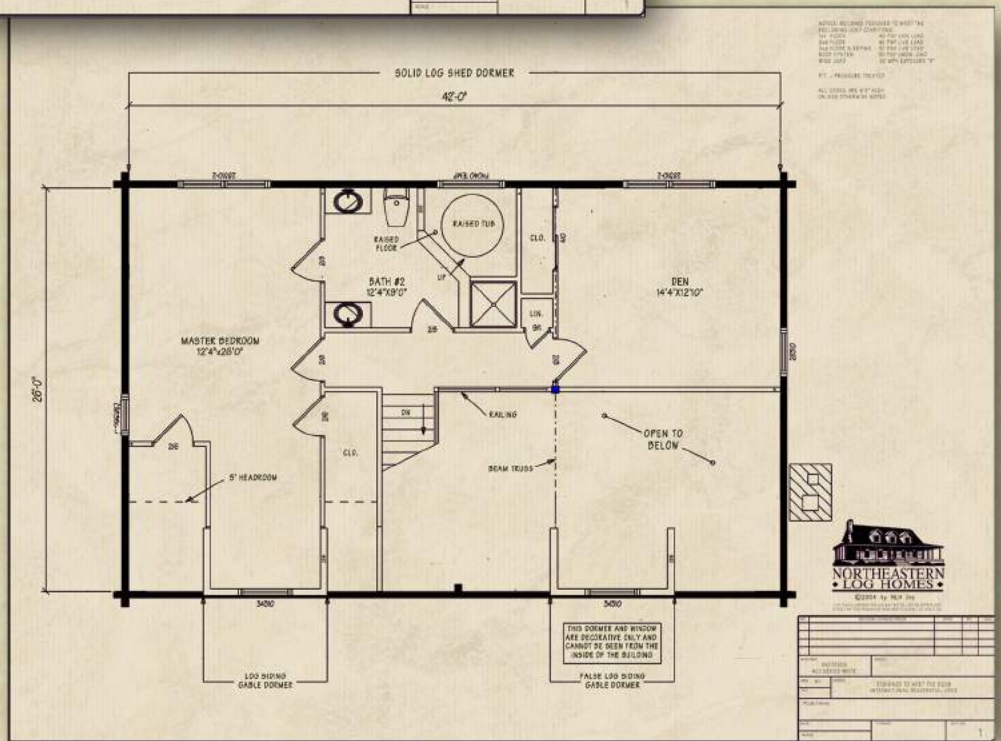
- Remove the partition wall between the two first floor bedrooms to create a master bedroom suite on the first floor

- Open up the false log siding gable dormer to allow more light into the great room

- The upstairs bath window is a picture unit--it can be changed to a double-opening casement unit

- The Den upstairs can easily be made into a 4th bedroom, or, alternatively the wall of the Den can be removed to create a fantastic loft area that overlooks the downstairs Great Room

- A small porch entrance can be added off to the kitchen side



Northeastern Log Homes

info@northeasternlog.com 800-624-2797 www.northeasternlog.com

*Artist's rendering, photography & optional design ideas may vary from the standard model. Please always refer to the standard floorplan and consult the Premier Home Series Material List as to what is included. All plans, photography and images copyright NLH 2016

